



GMT MONTHLY MEMBERSHIP PROGRESS REPORT

Results as of: 5/31/2024

Multiple District 325

LOCATION: NEPAL

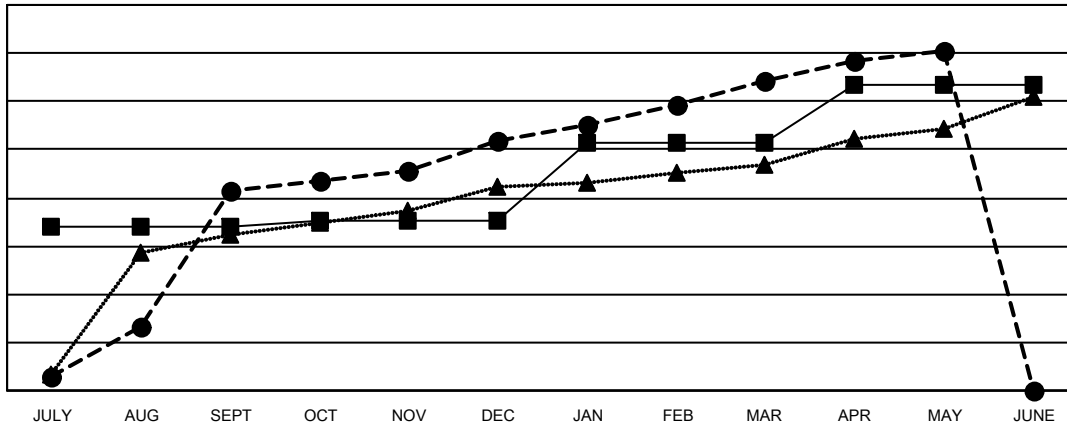
GMT: OPEN

GMT CA 6 - S

Clubs			
RESULTS FOR 2023-2024			
QUARTER	NEW CLUB GOAL	NEW CLUBS	DROPPED CLUBS
JULY/AUG/SEPT	136	166	36
OCT/NOV/DEC	5	41	120
JAN/FEB/MAR	65	50	38
APR/MAY/JUNE	47	25	21

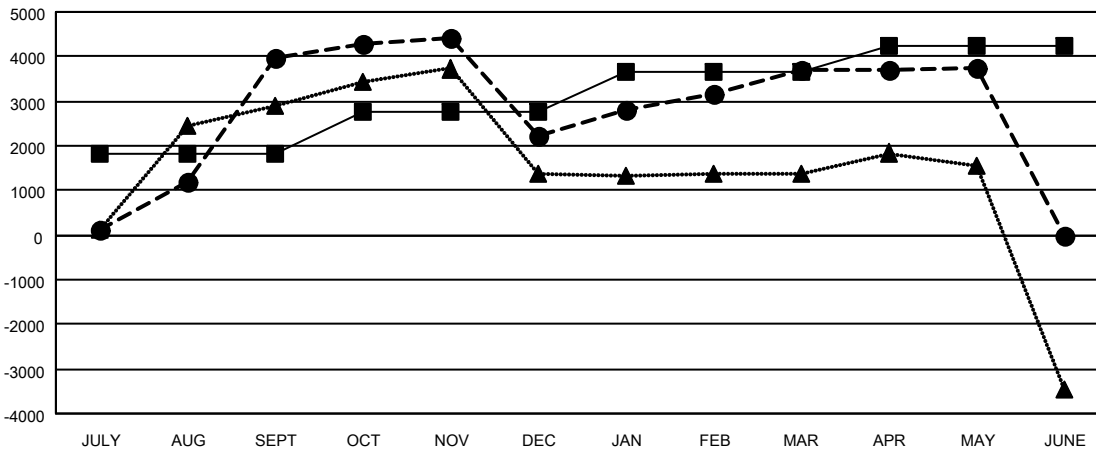
Members			
RESULTS FOR 2023-2024			
QUARTER	MEMBER GROWTH NET GOAL	MEMBER GROWTH ACTUAL	DROPPED MEMBERS ACTUAL (including transfers)
JULY/AUG/SEPT	1,804	6,399	2,198
OCT/NOV/DEC	957	2,537	4,218
JAN/FEB/MAR	879	3,144	1,409
APR/MAY/JUNE	615	1,182	905

GOALS AND ACTUAL NEW CLUBS CUMULATIVE



- - CURRENT YEAR GOALS FOR NEW CLUBS
- - CURRENT YEAR ACTUAL NEW CLUBS
- ▲ - LAST YEAR ACTUAL NEW CLUBS

GOALS AND ACTUAL MEMBERS CUMULATIVE



- - MEMBER GROWTH NET GOAL
- - MEMBER GROWTH ACTUAL
- ▲ - LAST YEAR MEMBERSHIP ACTUAL

DROPPED CLUBS: 213	1424 CLUBS OF 2122 ADDED 1 OR MORE NEW MEMBERS	GENDER DISTRIBUTION	
		MALE	30,632 (68.72%)
		FEMALE	13,946 (31.28%)
DROPPED MEMBERS		TOTAL FAMILY UNIT MEMBERS 32,650	
DECEASED	34	FAMILY MEMBERS PAYING HALF DUES 22,886	
CLUB CANCELLED	3,042		
OTHER	5,637		
TOTAL	8,713		

[CLICK HERE FOR CUMULATIVE MEMBERSHIP DATA](#)